

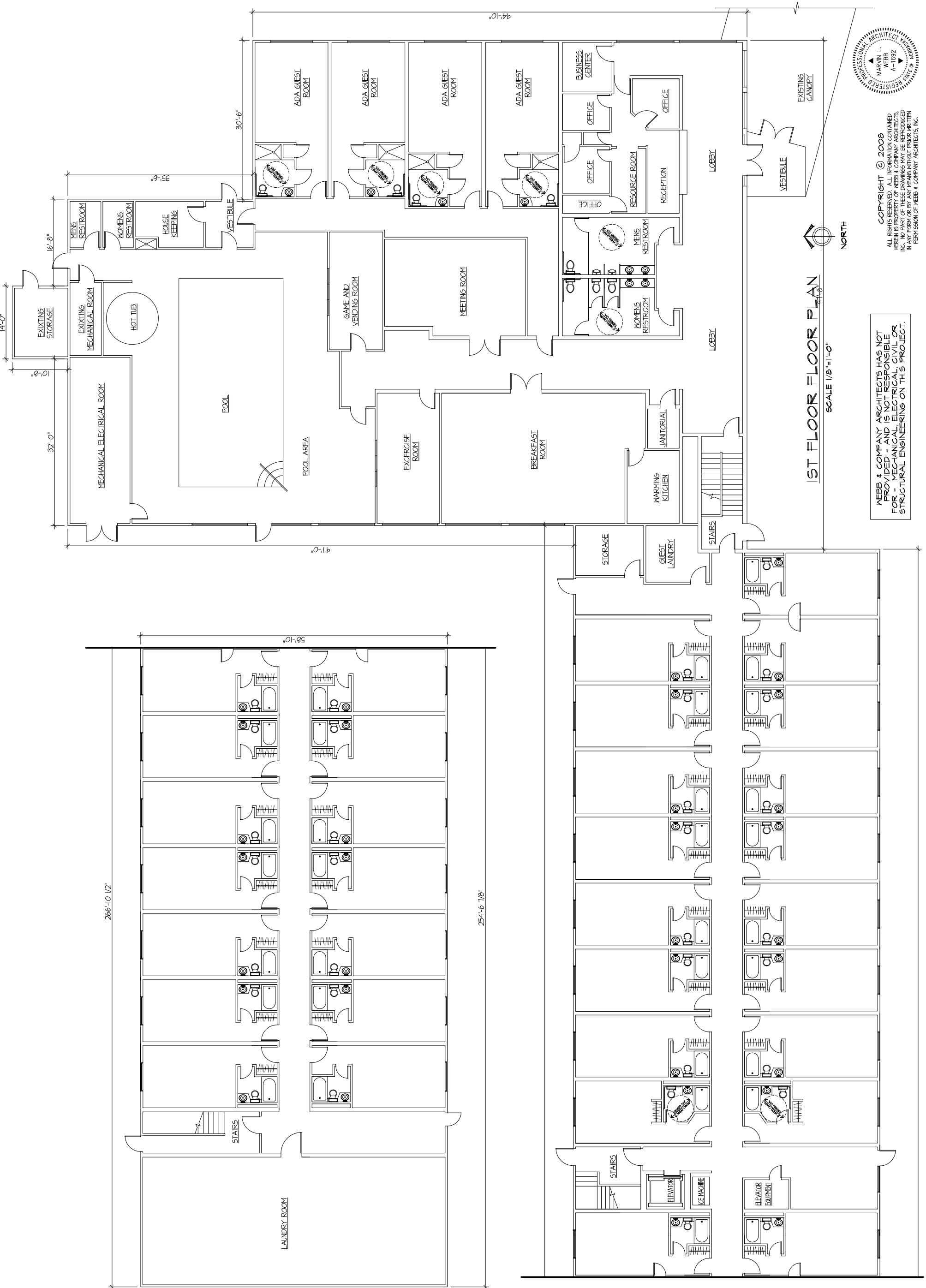
1ST FLOOR ROOMS
AND LOBBY REMODEL

WEBB & COMPANY
A.R.C.H.I.T.E.C.T.S
Grand Island
Nebraska
Marvin Webb, AIA Architect 308/381-8013

1ST INN GOLD
224 2ND AVENUE SOUTH
KEPNER, NEBRASKA

DATE
SEPT. 15, 2008
PLANS
NCA PROJECT
#282T
SHEET

A.I.I.



1ST FLOOR FLOOR PLAN
SCALE 1/8" = 1'-0"



WEBB & COMPANY ARCHITECTS HAS NOT PROVIDED - AND IS NOT RESPONSIBLE FOR - MECHANICAL, ELECTRICAL, CIVIL OR STRUCTURAL ENGINEERING ON THIS PROJECT.

COPYRIGHT © 2008
ALL RIGHTS RESERVED. INFORMATION CONTAINED HEREIN IS THE PROPERTY OF WEBB & COMPANY ARCHITECTS, INC. NO PART OF THESE DRAWINGS MAY BE REPRODUCED IN ANY FORM OR BY ANY MEANS WITHOUT PRIOR WRITTEN PERMISSION OF WEBB & COMPANY ARCHITECTS, INC.

